



Forward Thinking, High Achieving.

# BIG SKY HIGH SCHOOL

Our proposal addresses areas of critical need, including updating technology infrastructure, increasing safety and security, addressing deferred maintenance and improving flexible learning spaces.



A systemwide initiative to develop schools that work smarter for our students.

MEET YOUR SMART SCHOOLS TEAM

The Big Sky High School team put months into this process. We appreciate the input from students, parents, faculty, neighbors and the MCPS board. If you have questions or would like to get involved, we encourage you to visit [www.mcpsmt.org/bigsky](http://www.mcpsmt.org/bigsky) or contact Principal Natalie Jaeger at [njaeger@mcps.k12.mt.us](mailto:njaeger@mcps.k12.mt.us).

TEAM MEMBER CORE

Bethany Shepard, Teacher  
Marta Pierpoint, Parent  
Nikolay Andrushevich, Student  
Wendy Gay, Classified  
Brian Fortmann, Administrator

TEAM MEMBER EXPANDED

Dylan Dwyer, Teacher  
Michelle Manning, Classified  
Jennifer Courtney, Administrator  
Kathleen Kennedy, Teacher  
Matt Johnson, Teacher  
Rhonda Wakal, Parent  
Sarah DeGrandpre, Teacher

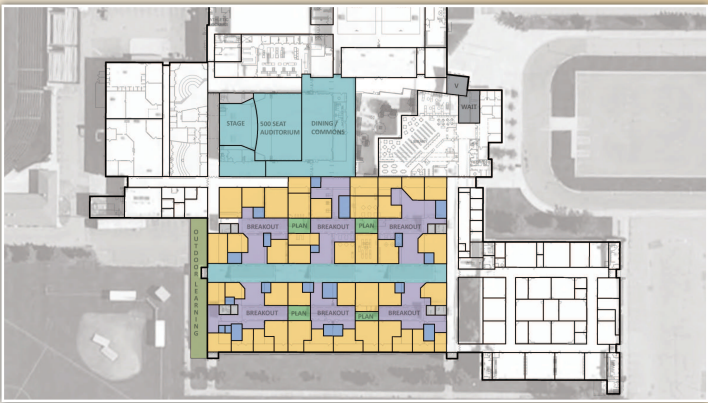
21ST CENTURY NEEDS

Big Sky High School, opened in 1980, is a beautiful facility for teaching and learning but lacks a clearly defined entrance, which raises safety and security concerns. Current technology infrastructure is not sufficient for mobile learning, and many learning spaces need renovation in order to maximize their use by students and teachers. In addition, the building roof suffers serious deferred maintenance.

EXPANDING BIG SKY HIGH SCHOOL

Our proposal to improve the building is designed to ensure Big Sky High School students have a facility that meets the educational needs of 21st century high school students. When complete, Big Sky will be a smarter school in many ways, including:

- An entryway that is visible to students, staff and parents — ensuring the safety and security of our building.
- A wireless Internet infrastructure that allows students to access online learning and create digital products from any educational space within the building.
- An increase in flexible learning spaces — supporting students and staff working in teams, collaborating and problem-solving.
- A repaired roof — preventing further leakage into classrooms and disruptions to classes.



OUR TEAM'S RECOMMENDED OPTION



OPTION E-1 EXPAND:

- Secure entry and waiting area.
- Enclose courtyard for dining/commons.
- Convert cafeteria into performance space.
- Expand stage.
- Create small learning communities within core classroom areas.

- Extend library roof over atrium with north- and south-facing windows.
- Address deferred maintenance and energy conservation projects.
- Upgrade auditorium.
- Improve classroom space.
- Technology improvements.

SECURITY

Modify facility to create obvious main entry, secure waiting area and ability to observe visitors approaching the building. Subdivide the building into secure zones with electronically activated door closers.

TECHNOLOGY

Develop high-speed/high-volume fiber optic distribution to breakout spaces for projects, presentations and technology in each learning community, enhanced with robust wireless and hard-wired access points.

ENVIRONMENT

Install barn doors and garage doors with quality acoustical materials between learning areas and breakout areas for projects, presentations and technology. Create small learning communities for teams of teachers and students that include traditional classrooms as well as important support spaces for 1:1 tutoring, small groups, planning centers, storage, etc.

FACILITIES STRATEGIC PLAN

Site Area: 35.98 acres  
Parking Spaces: 600  
Building Square Footage  
Existing: 255,873  
Renovate: 58,300  
New: 6,000  
Estimated Project Budget: \$12,111,981\*  
Replacement Cost: \$62,160,000  
Remaining Deferred Maintenance & Energy Project Costs: \$0  
Rental / Lease / Sale Income: None  
Current Enrollment: 1,083  
Future Peak Enrollment: 1,332  
Capacity: 1,500–1,800

\*All costs are projected based on industry averages for building costs, sizes and land prices. Final project budget will be developed during the design phase.



## NOW IS THE TIME TO INVEST IN SMARTER SCHOOLS

Education has never been more important than it is today. Our students face international competition for scholarships and jobs, and an increasing pace of change that impacts their futures. Yet, while the need for quality education continues to increase, our schools are physically in decline.

At Missoula County Public Schools, we realize that we must change if we're to keep up academically and economically as a community. That's why we launched Smart Schools 2020. Led by teams from each school, the initiative assesses needs by facility and prioritizes those needs in light of achieving our goals of a 21st Century Educational Culture and of being fiscally responsible.

By addressing schools now we prevent further deterioration of facilities, better prepare for population growth and ensure our students continue to get the educational opportunities they need to succeed in school and beyond.

## THE SMART SCHOOLS PROCESS

### **SCHOOL CENTRIC:**

Criteria and preferred options were established for each school by a team of teachers, administrators, students and parents from that school, along with members of the Missoula community.

### **COLLABORATIVE:**

Alternatives were shared at public meetings at each school. In addition, surveys were sent out systemwide to vet priorities.

### **REALISTIC:**

Team recommendations were reviewed by the steering committee and the elected board of trustees before a bond measure was drafted.

### **PUBLIC:**

Everyone is invited to review options and weigh in. Final support for the initiative will be determined by public election in November 2015.



To get involved, please visit [www.mcpsmt.org/bigsky](http://www.mcpsmt.org/bigsky) or contact Principal Natalie Jaeger at [ncjaeger@mcps.k12.mt.us](mailto:ncjaeger@mcps.k12.mt.us).